



CORTONA COLLECTION

Our kitchen styles explained

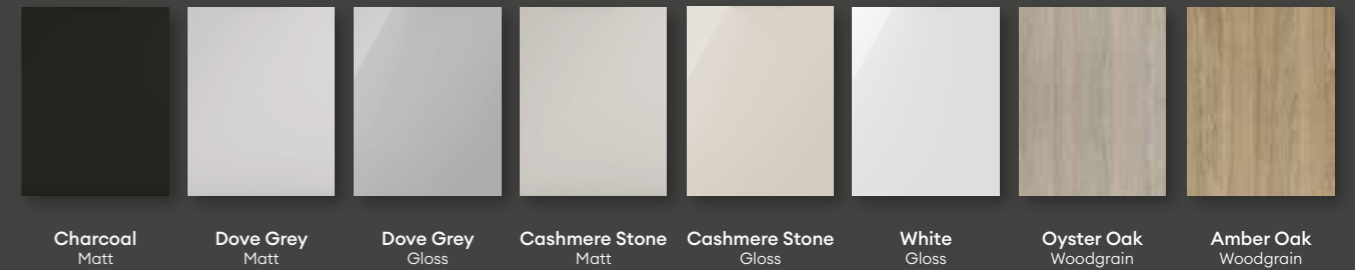
Slab

Slab doors in matt and gloss painted finishes, plus 2 woodgrain options.



Lucca Slab with matt, gloss, and woodgrain finishes

pg 6



J Pull

A handleless contemporary J pull with minimalist lines in matt and gloss finishes.

Venezia J Pull with matt and gloss finishes

pg 24



Shaker

Combining traditional shaker design with modern narrow frame width in 3 matt options.



Lago Shaker with matt finish

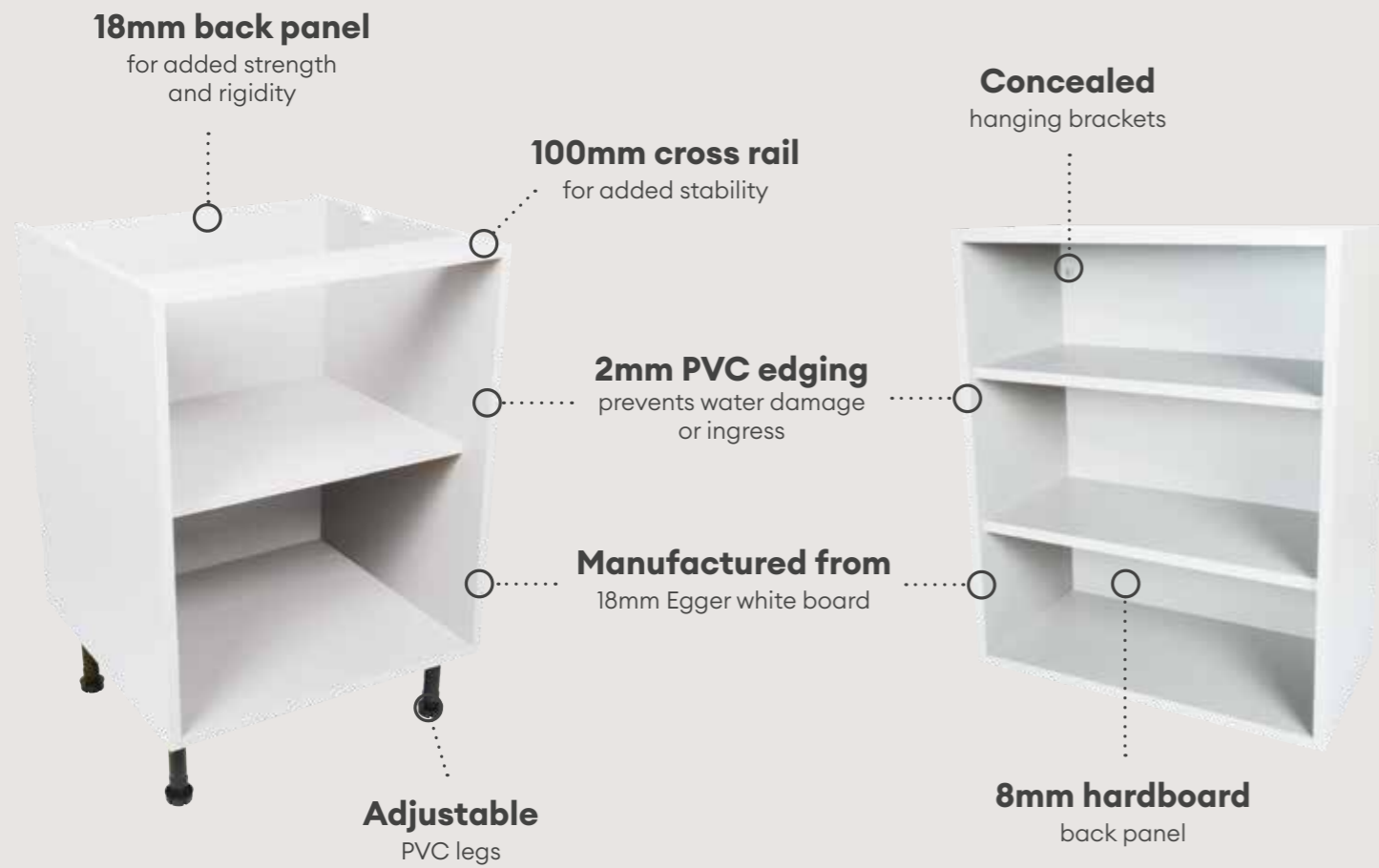
pg 36



Best selling door ranges and colours

Our cabinets

A cabinet is the foundation of every kitchen and the Cortona cabinet provides outstanding quality and features that you can rely on.



Cortona kitchens are guaranteed for 6 years against manufacturing defects.



Our products are also FIRA Gold certified, assuring you of our high standards.

Drawers & hinges

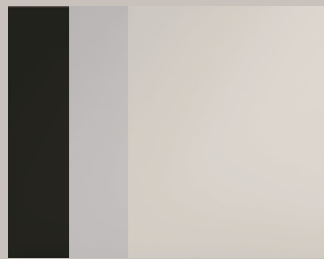
Both Cortona drawers and hinges are soft close as standard. Each drawer can hold as much as 40 kilograms of weight, while our hinge speed can be adjusted to suit your patience!

Lucca

Slab with matt, gloss & woodgrain finishes

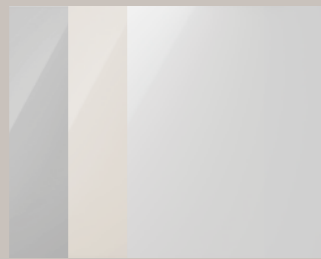
Lucca provides a modern, simple slab design in gloss, matt and woodgrain finishes. Easy to maintain and always in fashion!

Range contents



3 matt colours

- Charcoal
- Dove Grey
- Cashmere Stone



3 gloss colours

- Dove Grey
- Cashmere Stone
- White



2 woodgrains

- Oyster Oak
- Amber Oak



Lucca Matt Dove Grey



Lucca Gloss

Cashmere Stone

Small kitchen but still want the wow factor?
Gloss Cashmere Stone is the ideal choice!



Lucca Gloss

White

Gloss White slab design is a timeless favourite and always popular in smaller rooms.

Lucca Gloss

Dove Grey

Dove Grey is a highly popular neutral alternative to white, and is ideal in smaller room sizes.





Lucca Woodgrain

Amber Oak

Add timber effect into your kitchen with the warmth of Amber Oak. Black handles complement the grains beautifully.



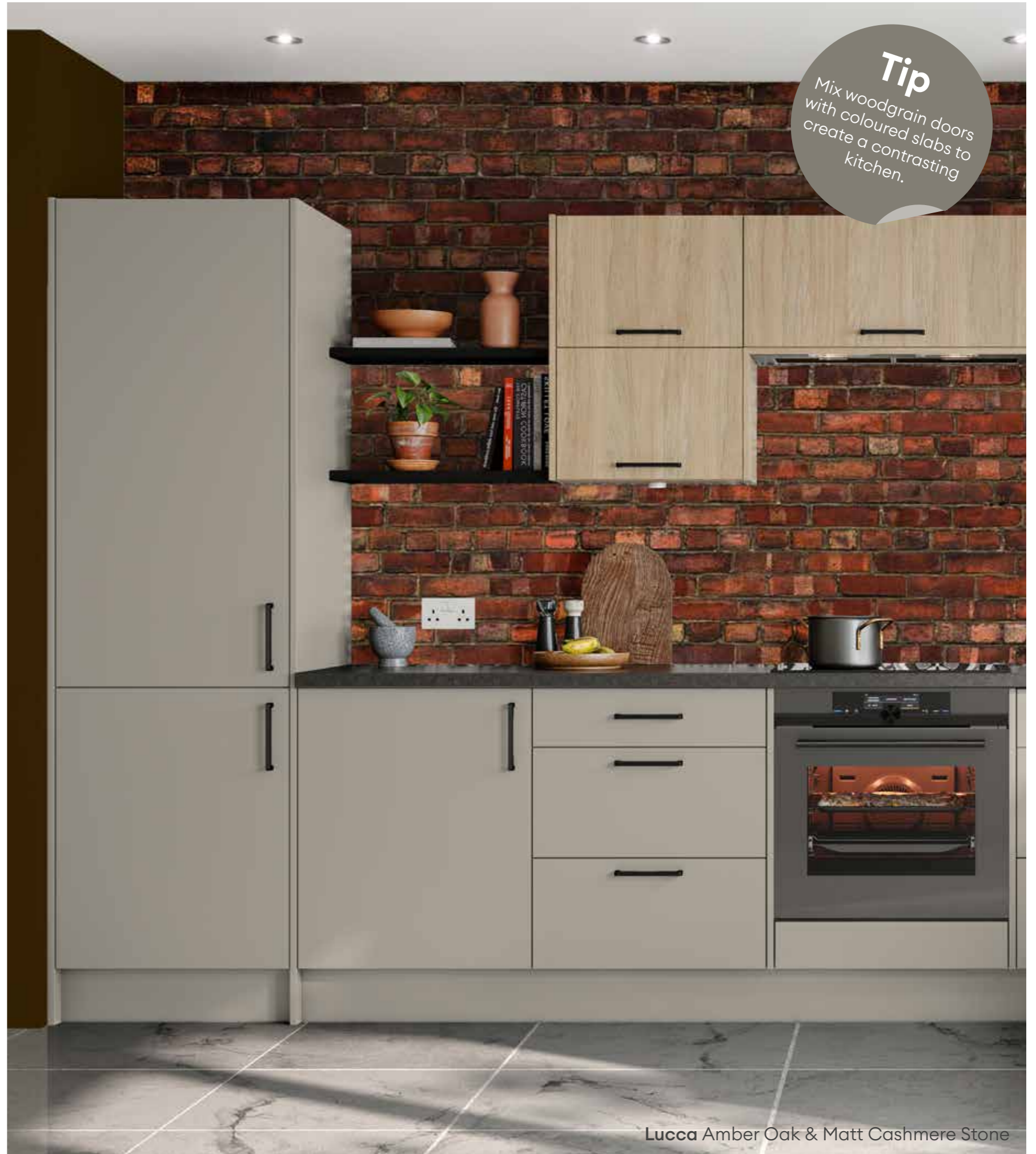
Lucca Woodgrain

Oyster Oak

Oyster Oak provides a Scandinavian feel to the kitchen while a simple bar handle allows the furniture to be the focus of the room.



Lucca Oyster Oak & Matt Charcoal



Tip
Mix woodgrain doors with coloured slabs to create a contrasting kitchen.

Lucca Amber Oak & Matt Cashmere Stone



Lucca Matt

Charcoal

Add depth and character to your kitchen with the introduction of matt Charcoal. The tone is often chosen where light and space are in abundance.

Lucca Matt

Cashmere Stone

Cashmere Stone shows its flexibility here, combining with different accessory and wall colours to stunning effect.



Venezia

J Pull with matt and gloss finishes

Create a contemporary, handleless kitchen with our Venezia range in reflective gloss or tactile matt colours.

Range contents



3 matt colours

- Charcoal
- Dove Grey
- Cashmere Stone



3 gloss colours

- Dove Grey
- Cashmere Stone
- White



Venezia Matt Charcoal



Venezia Matt

Cashmere Stone

Cashmere Stone is a warm tone that blends beautifully with virtually all decor colours. Position ovens in appliance housings for ergonomically friendly cooking.



Venezia Matt

Dove Grey

A popular neutral tone, Dove Grey brings calm and balance to a room, while an island can be a multi-functional area and a feature of your kitchen.

Venezia Gloss

White

White kitchens are always in fashion, clean and crisp, while Venezia helps create minimalist lines.





Venezia Gloss

Cashmere Stone

Choose Cashmere Stone in gloss when you're looking for a warm feel with light and reflections.

Venezia Gloss

Dove Grey

Dove Grey in gloss has been a firm favourite in the UK for over a decade. Bring light and fashion to your kitchen.



Lago

Shaker with matt finish

Lago combines traditional shaker design with a modern narrow frame width in 3 matt options. A perfect choice for all generations!

Range contents



3 matt colours

- Indigo
- Light Grey
- White



Lago

Indigo

The rich tone of Indigo makes a real design statement in the kitchen and contrasts beautifully with copper handles.





Lago

Light Grey

Clever kitchen design allows an island to be incorporated into most rooms and to be combined as a dining and cooking space.



Handles

The finishing touch of your furniture, handles can play a major or understated part of your new kitchen. Choose from our multiple shapes and colours.

Finishes available:

- Matt Black
- Graphite
- Pewter
- Chrome
- Brushed Steel
- Brushed Nickel
- Matt Gold
- Antique Bronze
- Antique Copper

Matt Black

Graphite

Pewter



Pure knob



Imperial handle



Imperial handle



Lip handle

AVAILABLE IN 50MM, 100MM AND 200MM



Wave handle



Cup handle



Knurled knob



D-Lite



Disc knob



Kurva handle



Flow Handle



Excel handle



Linder handle



Knurled handle

Chrome



Disc knob



Orbit knob



Square handle



Elipse knob



Round knob



Pure knob



Sen cup handle



Lip handle



Cup plus handle



Imperial handle



Benson handle



D-Lite



Wave handle



Victorian handle



Flow handle



Contour handle

Brushed Steel



Pure knob



Block end bar handle



Precision handle



Sen cup handle



Massiv block end handle



Flat end T bar handle



Strap bar handle



Round end bar handle



Square bar handle



Wide D handle



Strap handle



Bow T bar handle



Half moon bar handle



Bow handle



Bow shaker



Slim T bar handle



Shaker handle



Flat end bar handle



Wave

Brushed Nickel

Matt Gold

Matt Gold

Antique Bronze

Antique Copper



Orbit knob



Bow T bar handle



Disc knob



Wave handle



Orbit knob



Elipse knob



Disc knob



Bow pointed T bar handle



Pure knob



Linder handle



Disc knob



Imperial handle



Elipse knob



Strap handle



Knurled knob



Excel handle



Elipse knob



Wave handle



Cup handle



D-Lite handle



Cup handle



D-Lite handle



Cup handle



D-Lite



Cup plus handle



Flow handle



Sen cup handle



Flow handle



Cup Plus handle



Imperial handle



Kurva handle



Imperial handle



Kurva handle



Linder handle



Excel handle



Knurled handle

Sinks & taps

Our concise range of sinks and taps provides you with a choice of shapes and colours.

Composite Sinks



Xcite Granite Black Single Bowl



Xcite Granite Black Bowl and Half



Xcite Granite Grey Single Bowl



Xcite Granite Grey Bowl and Half



Dune Granite Metallic Grey Bowl and Half

Ceramic Sinks



Belfast



Sandon Single Bowl



Sandon Bowl and Half



Milford Single Bowl



Milford Bowl and Half

Stainless Steel Sinks



Steam



Neron Single Bowl



Trydent Single Bowl



Ixis Single Bowl



Matrix Single Bowl



Quarry



Neron Bowl and Half



Trydent Bowl and Half



Ixis Bowl and Half



Matrix Bowl and Half

(LH & RH available)

Chrome



Althia Chrome



Linear Flair Chrome



Eden Chrome



Fraction Chrome



Globe Chrome



Ouse Chrome



Brock Chrome



Pico Quad Chrome



Ludlow Chrome



Prime Chrome



Beck Chrome



Tyne Chrome



Severn Chrome



Rissle Chrome

Matt Black



Althia Matt Black



Fraction Matt Black



Spey Chrome & Matt Black



Globe Matt Black



Eden Matt Black

Brushed Nickel



Pico Quad Brushed Nickel



Beck Brushed Nickel

Antique Bronze



Ludlow Antique Bronze

Brushed Brass



Althia Brushed Brass



Fraction Brushed Brass



Globe Brushed Brass

Brushed Steel



Linear Flair Brushed Steel

Smart Storage

Make the most of every kitchen cabinet and make everything easy to reach with our soft closing kitchen storage in a chrome/matt metallic finish.



Corner Storage Solutions

1. Dynamic Combi Pull Out Shelves
2. Dynamic 1/2 Carousel with 2 baskets
3. Dynamic 3/4 Carousel with 2 baskets



Single pull out baskets

300, 400, 500, 600, 800, 1000mm



Under sink pull out

1000mm



Maxima pull out

500, 600mm



150mm Pull out base



300mm Pull out base



Pull out towel rail

150mm

KITCHEN DOOR

Care Instructions

We recommend the following door cleaning instructions for all of our doors:

- Clean the doors using only a solution of 95% lukewarm water with no more than 5% soap.
- DO NOT spray anything on to your doors, this includes the solution recommended above.
- Use a clean damp (not wet) cloth
- Dry with a soft clean cloth.
- Any cooking marks must be wiped immediately.
- Do not allow liquids to seep into joints of doors. Wipe any spillages immediately.

DO NOT use any of the products listed below to clean the door as they may mark and damage the surface:

- Wax Furniture Polish
- Bleach/chlorine based cleaning products
- Abrasive cleaners
- Solvents
- Multi-purpose cleaners
- Alcohol based cleaners
- Ammonia or any other similar product
- Scouring pads or abrasive cloths

Environmental Information:

Please be aware, localised or intense heat/steam can damage fascias. Subsequently the use of small appliances such as kettles, toasters etc. in close proximity to your kitchen fascias should be avoided. Doors should not be exposed to extreme temperature changes.

Due to the limitations on photographic reproduction, colours may differ slightly from the actual products shown.

DATE OF PRINT / RELEASE: SEPTEMBER 2024

CORTONA
COLLECTION